

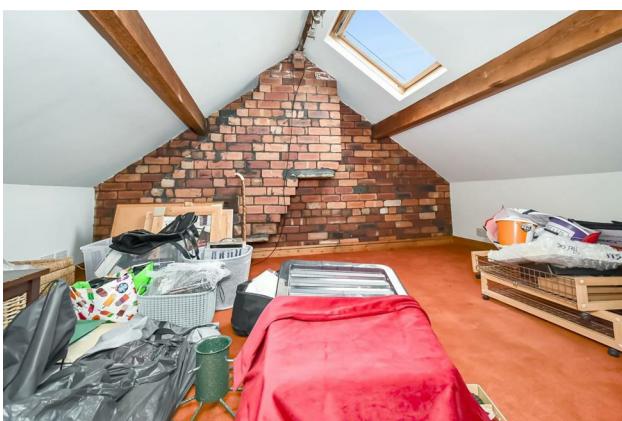
HUNTERS®

HERE TO GET *you* THERE

5 Benton Park Drive, Rawdon, Leeds, LS19 6AN

Price £249,950

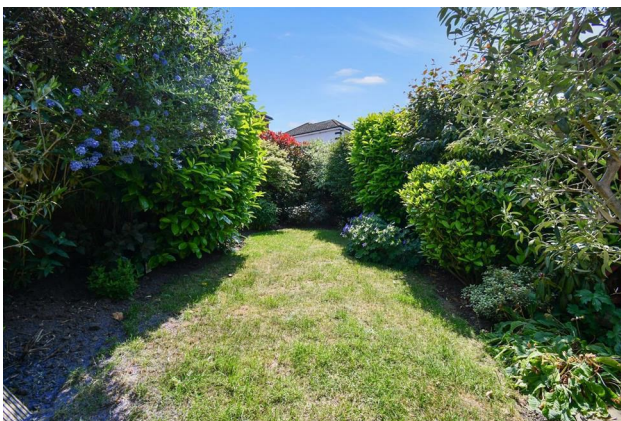
Property Images



HUNTERS®

HERE TO GET *you* THERE

Property Images



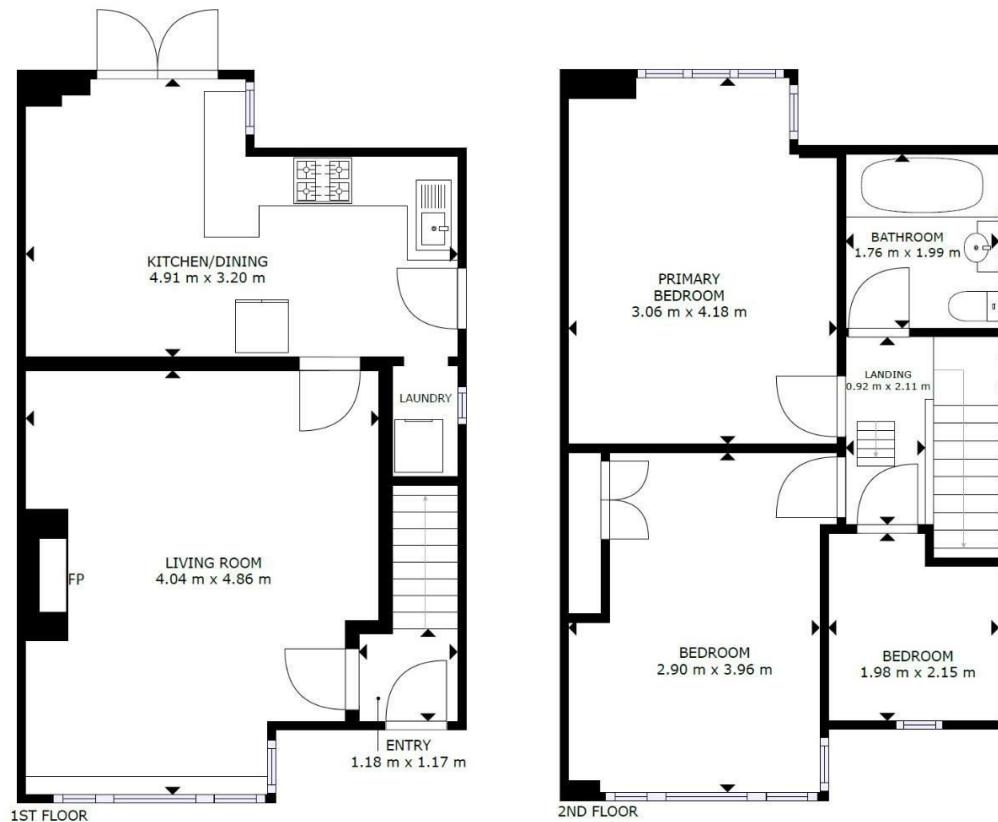
HUNTERS[®]

HERE TO GET *you* THERE

Property Images

HUNTERS®


HERE TO GET *you* THERE



GROSS INTERNAL AREA
1ST FLOOR: 36 m², 2ND FLOOR: 36 m²
TOTAL: 72 m²
SIZES AND DIMENSIONS ARE APPROXIMATE, ACTUAL MAY VARY.

Matterport

EPC

Energy Efficiency Rating		
	Current	Potential
Very energy efficient - lower running costs		
(92 plus) A		77
(81-91) B		
(69-80) C		
(55-68) D	51	
(39-54) E		
(21-38) F		
(1-20) G		
Not energy efficient - higher running costs		
England & Wales		EU Directive 2002/91/EC 

Map



Details

Type: House - Semi-Detached Beds: 3 Bathrooms: 1 Receptions: 2 Tenure: Freehold

Summary

Introducing a charming two-bedroom semi-detached home nestled in a desirable location close to local schools and parks. Upon entering, you are greeted by a welcoming entrance hallway that sets the tone for this lovely property.

Features

- SUPERBLY PRESENTED FAMILY HOME • PLEASANT GARDENS • CLOSE TO SCHOOLS • IDEAL FIRST TIME BUYER PROPERTY • DRIVEWAY • DINING KITCHEN • GAS HEATING AND DOUBLE GLAZING • HUNTERS 360 TOUR • EPC RATING = E